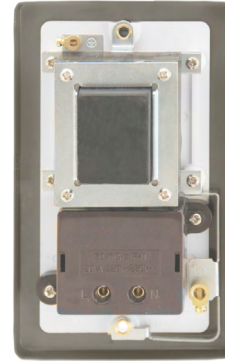


Product Code: VPBN100BK

Luckinslive 389109185

Description: 115V/230V Dual Voltage Shaver Socket Outlet



General Information

| | | |
|--------------------------------------|---|--|
| Plate Dimensions (mm) | 88 (W) x 146 (H) x 8 (D) | |
| Dimensions With Gasket (mm) | 91 (W) x 149 (H) x 9 (D) | |
| Plate Fixing Centres - Vertical (mm) | 120.6 | |
| Style | Victorian | |
| Finish | Black Nickel | |
| Insert Colour | Black | |
| Gasket Colour | Black | |
| Materials | Front Plate: Stainless Steel Terminals: Brass Contacts: Silver "on-lay" Copper / Brass Earth Strap: Mild Steel | Insert & Rear Housing: Urea Terminal Screws: Steel & Yellow Passivated Internal Busbars: Formed Pressed Brass Gasket: Nylon |
| Anti Microbial Certified | No | |
| Operating Voltage (AC) | 220-240 | Frequency (Hz) 50/60 |
| Load Rating @115V (Va) | 20 | |
| Load Rating @230V (Va) | 20 | |
| Thermal Protection Device | PTC Resettable Fuse | |
| Termination Type | Screw | |
| Terminal Size (mm) | Ø3.5 | Terminal Torque Value (Nm) 0.5 |
| Terminal Capacity - Solid (mm²) | 2 x 1.5 or 1 x 2.5 | |
| Socket Features | Safety Interlock Shutter | |
| Twin Earth Terminals | Yes | |
| Product Marking | Shavers Only, 230V~, 115V~ | |
| Minimum Back Box Depth (mm) | 47 | |
| Ingress Protection | IP20 | |
| Operational Temperature (°C) | -5 to +40 | |
| Warranty (Years) | 20 | Warranty - Electronics (Years) 2 |

Standards BS EN IEC 61558-1, BS EN 61558-2-5

Additional Information

For cleaning / polishing of products, use only a soft, dry, clean cloth.

This outlet is not continuously rated and therefore not suitable for use as a permanent charging outlet.

CLICK dual voltage shaver outlets incorporate a double wound isolating transformer rated 20Va at 230V or 115V and meets BS EN 61558-2-5:2010 making it safe for use in bathrooms.

PTC resettable fuses increase resistance as temperature increases due to increased flow. PTC resettable fuses are designed to limit unsafe currents while allowing constant safe current levels, resistance will "reset" automatically when the fault is removed and temperature returns to a safe level.

Ensure that the mains supply is isolated before commencing installation and refer to the circuit diagram with the relevant product.

Bare earth cables must always be covered with appropriate sleeving and wired to the earth terminal.

